

Swiss Gulf Engineering

Cutting-Edge Swiss Engineering in the Gulf



A faint, light gray world map is visible in the background of the entire page. The map shows the outlines of continents, with a particular focus on the Middle East and surrounding regions, which aligns with the company's name and focus.

Swiss Gulf Engineering

Cutting-Edge Swiss Engineering in the Gulf



Swiss Gulf Engineering

Word from the CEO

It became obvious today that the effects of globalization such as climate change, ecological, financial and economic crisis know no borders. In turn, the engineering community is also facing multiple challenges imposed by environmental, social and sustainable development.

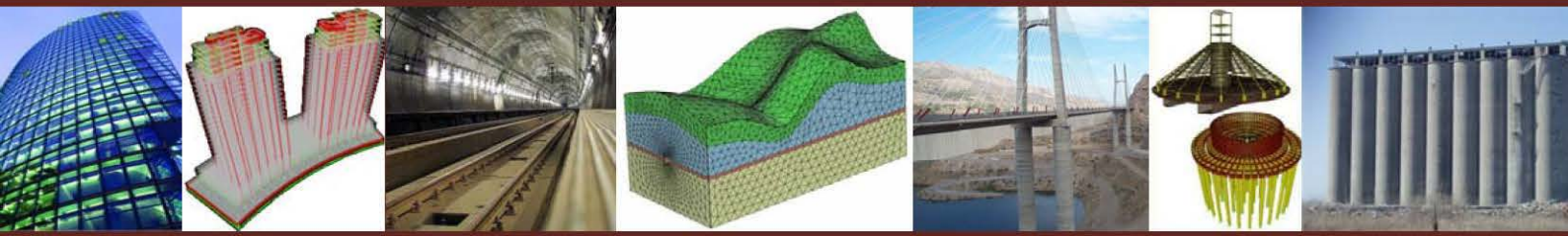
In this increasingly competitive and challenging environment, it has become imperative, for a consulting company as Swiss Gulf Engineering (SGE), to focus not only to attract multidisciplinary high-skilled engineers but also to go beyond the borders with strategic partnerships. Undeniably, worldwide collaboration and networking have become nowadays an invaluable reservoir of experience, expertise and collective intelligence.

Our goal, at SGE, is to provide you, our clients, with the cutting-edge engineering solutions. To achieve that, we setup multidisciplinary world-class team. We can cover large activity domains and particularly Infrastructure, Environment, Energy and complex Buildings. We have also invested in a regional and international network with the aim of becoming the most dynamic, efficient and innovative engineering and consultancy company in the GCC region.

We, at SGE, are all looking forward to serving you and your organization.

Yours sincerely,

Dr Eng. Amor Guidoum



Cutting-Edge Swiss Engineering in the Gulf

About us

SGE is a company based in Qatar, which has forged a strategic partnership with leading Swiss engineering firms. Our mission is to offer our clients in the public and private sectors in the GCC region the best Swiss engineering solutions that meet the expectations of a fast-changing world.

SGE provides its services in wide areas of expertise such as: buildings construction, infrastructure, water & environment, transportation, industrial facilities projects, etc.

Our QUEST is :

Quality, Efficiency, Innovation and Teamwork

The Team

SGE combines strong technical skills thanks to the expertise of its resident engineers who hold PhDs and Mscs from prestigious European institutions, added to more than 50 years international experience in Europe and North Africa in Infrastructure, Building and Material Engineering. All of them obtained Grade A license from the Engineering & Consulting Offices Accrediting Committee.

Partner

SGE is a local Qatari company but with a strong international relationship thanks to its dense network and its strategic partnerships with leading Swiss engineering and consultancy offices which cumulate more than 1000 engineers.



Civil Engineering

- Bridge
- Tunnels
- Underground space design
- Dams
- Materials engineering

Building

- Towers
- Administrative buildings
- Industrial Buildings
- Parkings

Water and Environment

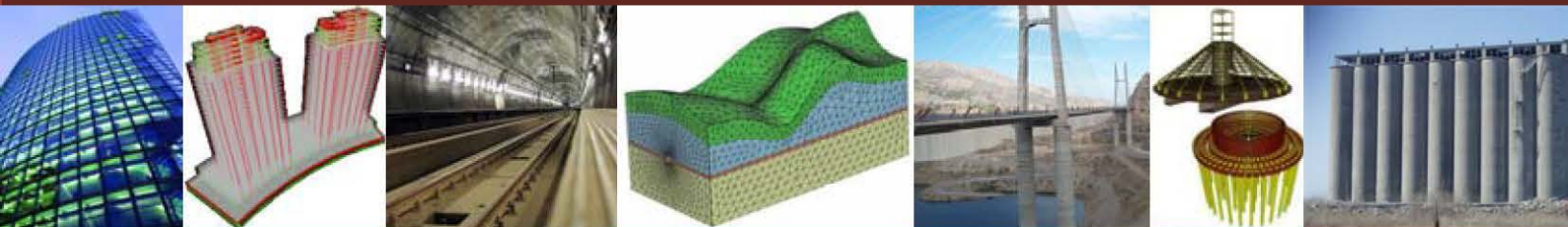
- Water supply
- Waste water treatment
- Sewage
- Hydraulics
- Solid waste treatment

Transportation

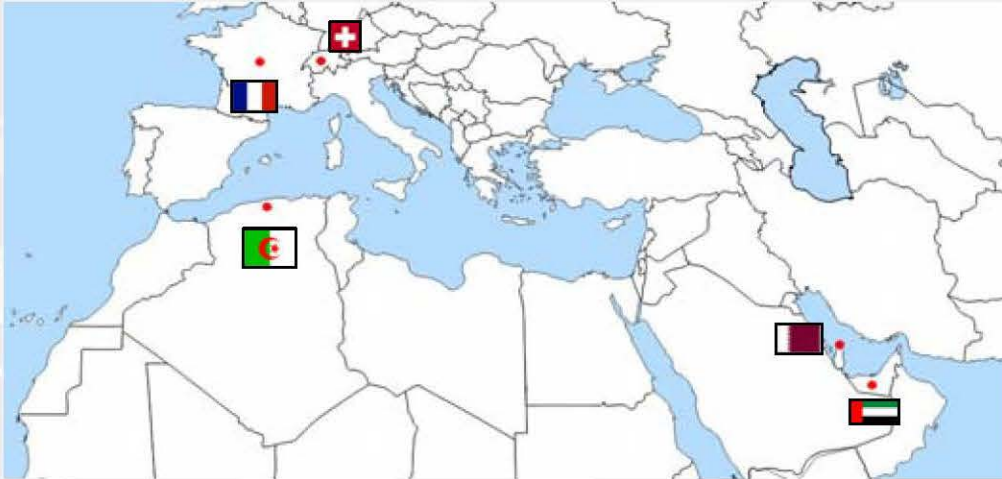
- Roads
- Highway
- Railways
- Airports

Others Services

- R & D
- Training
- Assessment and health monitoring
- Retrofitting
- Feasibility studies
- Expert analysis
- Material testing
- Value Engineering



Our Presence (SGE & Partners)



Engineering Partners



Architecture & Landscaping Partners



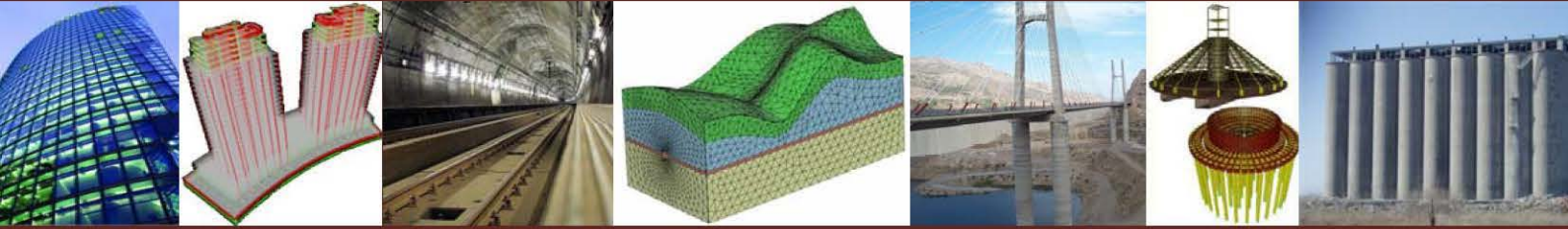
ZIMMERMANN
ARCHITECTES SA



GILBERT HENCHOZ
ARCHITECTES PAYSAGISTES CONSEILS SA

M.E.P Partners





Large Studies

Assessment, Diagnosis and Design of sewage master plan of Annaba, Algeria.

Services

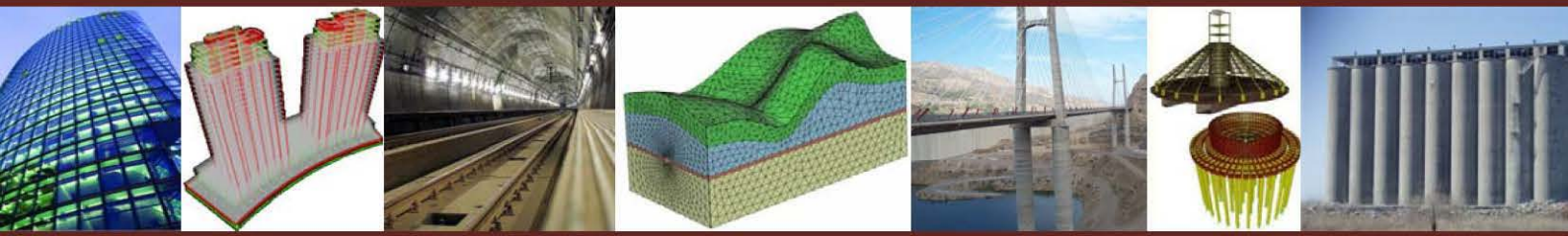
- Investigation, collection and preparation of drawings and cartography
- Diagnosis and modelling of sewage system, treatment and flood management
- Quick improvement solutions
- Sanitation master plan
- Sketch stage refurbishment, resizing and extension of the system
- Tender documentation

Scope

Annaba agglomeration, 3 towns and 14 secondary urban areas
Population concerned: 500 000 inhabitants
485 km network (primary and secondary)
30 main pumping stations

Key points

- Input and synthesis of data on GIS (ArcGIS) with staff training
- Data processing and MOUSE modelling (hydrodynamics) and pollution assessment of the whole system
- Measuring campaign of waste-water quality and quantity
- Coordination between flood, sanitation and potable water studies
- Assistance in the organisation of sanitation
- Implementation of emergency measures



Assessment, Diagnosis and Design of potable water master plan of Annaba, Algeria.

Services

- Investigation, collection and preparation of drawings and cartography
- Diagnosis and modelling potable Water system, treatment and flood management
- Quick improvement solutions
- Drinking Water master plan
- Sketch stage refurbishment, resizing and extension of the system
- Tender documentation

Scope of the study

Annaba agglomeration, 3 towns and 14 secondary urban areas
Population concerned: 500 000 inhabitants
680 km network (primary and secondary)
45 main pumping stations

Key points of the project

- Data gathering and summarizing on GIS (ArcGIS) with staff training
- Data processing and modelling with WaterGems and Hammer
- Measuring campaign of drinking water quality and quantity
- Coordination between flood, sanitation and potable water studies
- Assistance in the organisation of sanitation
- Implementation of emergency measures

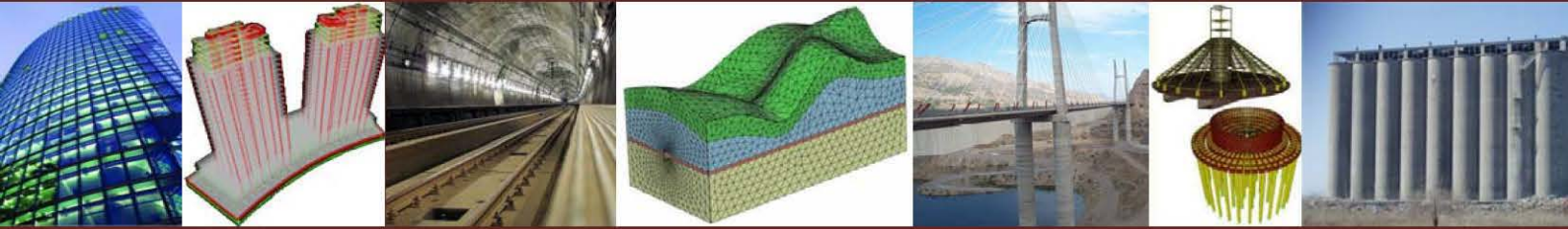


Other Projects

- Design of various villas and towers in Dubai and Ajmane, UAE (25 towers, up to 80 stories).
- Audit and technical checking (3rd Party) of different towers of EMAAR real estate in Dubai (10 towers, 40 stories), UAE.
- Carry out the engineering, procurement and construction (EPC) of the Services' Area and Potroom Building of a new aluminium smelter (Qatalum) in Mesaieed, Qatar- total US\$ 700 million, Qatar
- Building four parking in the Marina District of the new city of Lusail , Qatar
- PIZZAROTTI: TRAMWAY OF CONSTANTINE ALGERIA Tramway system of the city of Constantine (Algeria) 307 millions Euros, Construction of the tramway system of the city of Constantine - stretching for 9 km from the terminal of Zouaghi to the station of Ben Abdelmalek, Algeria
- Project management of Research work packages on Low Noise road pavements in urban areas. FEDRO (Swiss Federal Road Office) and FOEN (Swiss Federal Office for the Environment), Switzerland
- Prioritization of surface course replacement on the highway sections network .The highway network belonging to the south-west region in Switzerland is 400 km long. Swiss Federal Road Authority.

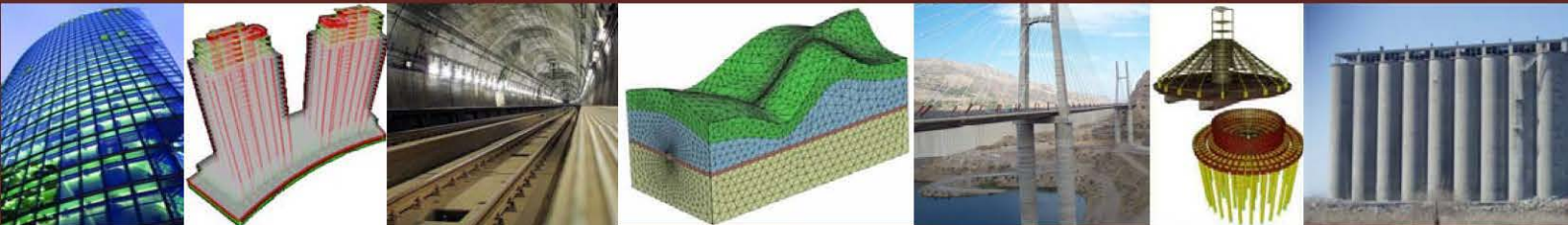


Section of projects in wich our team was involved



Other projects

- Survey Study of wastewater treatment centers Mila Ferdjioua, Zegher, Oued Endja, and Rouached Bougheraine, Amira Arres and agglomérations secondary isolated to protect the waters of the dam BénéHaroun. Algeria.
- Detailed Design of water supply Chaib Boukhadra Wilaya of Annaba (DN900, L = 6 km, pumping station and tanks 2x5000 m³), Algeria.
- Study and site supervision work of fitting out of the new city of Boughezoul (1200 Ha), Algeria
- Study and site supervision of new highway from Ain Defla town (20 Km)
- Study and site supervision of the expressway between RN1 and the new city of Boughezoul (10 Km), Algeria
- Experimental and numerical analysis of the Finland embassy, using the ambient and forced vibrations tests (2007) , Algeria.
- Structural damage assessment and retrofit of the new Algiers airport building, Society of airport Management, Algeria
- Design of the Algerian Seismic Engineering Laboratories, National Earthquake Engineering Centre, Algeria (C.G.S)
- Audit and technical assistance of preliminary and final structural design of new dam of TiziOuzou city and other services blocs, according to Algerian design regulations and codes, Algeria.
- Study and site supervision work of fitting out of the new city of Boughezoul (1200 Ha), Algeria



A faint, light gray world map is visible in the background of the entire page. The map shows the outlines of continents and major islands. A dark red horizontal band is positioned across the middle of the page, containing the company name.

Swiss Gulf Engineering PARTNERS



Engineering Partners



Vision & Strategy

BG group is a firm of consulting engineers operating at international level whose objective is to help its clients build a sustainable living environment. United around strong corporate values, the BG staff represents a remarkable collective intelligence able to provide simple answers to the complex issues arising from our planet's development.

It provides extensive services in the fields of infrastructure, environment as well as building and energy. BG's excellence is renowned in developing complex and challenging multidisciplinary projects, where its in-house competence in project management, risk assessment and optimum use of resources is a decisive factor.

Operating as a general contractor, BG takes responsibility for all engineering services – from the requirements analysis to start-up - including all aspects of project development and implementation.



BG Fields

A wide Range of Products

In the fields of *infrastructure*, *environment*, *building & energy*, BG offers its customers several types of services carefully tailored to each individual case.

- Infrastructure (tunnels, engineering structures, railway engineering, water & waste management, urban planning, etc.)
- Environment (hydrology, hydrogeology, hydraulics, water purification, water supply, watercourse development, ventilation systems and management of the quality of gaseous wastes in buildings and tunnels, etc.)
- Building (foundations and structural engineering, etc.)
- Energy (production, distribution and optimization of energy, Hydroelectricity, low-energy buildings, cogeneration, use of heating pumps, etc.)
- Techno-economic feasibility studies
- Project analyses (preliminary design / project)
- Coordinating calls for tenders
- Construction surveys
- Safety surveys
- Construction supervision
- Start-up
- Principal assistance
- Monitoring and follow-up of surveys and works
- Operation follow-up
- Environmental audits
- Expert appraisals.



BG Bonnard & Gardel Holding SA



Avenue de cour 61
Case postale 241
CH-1001 Lausanne
Tel.+41 21 618 11 11

www.bg-21.com



Who We are?

Founded in 1953, Emch+Berger is today one of the leading consulting, engineering and planning companies in Switzerland. Our customers want innovative solutions, high-quality work and maximum benefits. As employees and shareholders of our company, we aim to achieve these goals in an effective and responsible manner. You want only one partner for your complex projects. We offer you interdisciplinary global solutions from a single source. We coordinate the various departments and experts; you keep your mind clear to achieve your own objectives.

Sustainable success needs solid foundations. Emch+Berger's bases are our highly qualified and motivated employees, on-going training and the training of our apprentices. Equally important are the company culture marked by openness and mutual esteem, the use of modern technology and the careful handling of the environment and natural resources, and much more.



Emch+berger Fields of Activity



- Railway Construction and Technology
- Road and Motorway Construction
- Civil Engineering Structures
- Infrastructure and Geometrics
- Underground and Tunnel Construction
- Civil Engineering and Building Construction
- Hydraulic Engineering and Natural Hazards
- Environment and Safety
- Mobility and Transport
- Project and Management Consultancy
- Global solutions from a single source
- Broad spectrum of services
- Motivated and innovative teams
- Countrywide presence combined with local roots
- Experience in important, complex and ambitious projects
- Guaranteed quality according to ISO 9001, long experience in quality management

Emch+berger Services

Emch+berger Strengths

Emch+Berger Holding AG
Schlösslistrasse 19
Postfach 8565
CH-3001 Bern

Tel. +41 31 382 19 00
Fax +41 31 382 19 51
info@emchberger.ch
www.emchberger.ch





GESTE Engineering Objective's

Supporting sustainable development, innovation and research, we are privileged to collaborate with an excellent team of consulting-engineers. We work on important international projects where new technologies are applied to serve the human being, his mobility and safety, as well as the environment in which he lives.

Sustainable development, with its three complementary and inseparable pillars, is definitely in the center of our daily concerns and activities: **Economic pillar**, **Social pillar**, **Environmental pillar**.

Our first objective is thus to provide high quality services to support and develop sustainable projects which constitute today concrete solutions to needs of tomorrow.



GESTE Engineering Services

Following a global and trans disciplinary approach, we take part in the design from the very birth of the project. We carry out our services covering the whole life of the project, from feasibility studies to commissioning and personnel training.

GESTE Engineering SA
Parc Scientifique PSE-C
1015 Lausanne
Suisse
T: +41 21 694 18 00
F: +41 21 694 18 01
E: info@geste.ch

Studies

- Preliminary studies, comparisons of scenarios, multicriteria analyses
- Forward planning and strategic studies
- Risk assessment
- Studies on technical, economic, environmental and financial feasibility

Consultancy & Expert Advice

- Technological development monitoring and technology assessment
- Technical expert advice and audits
- Second opinions and expert reviews
- Training courses and seminars

Projects, Design & Construction Management

- Strategies, development stages and realization planning
- Business plans and financial engineering
- Devising preliminary designs and detailed designs
- Documents for public investigation
- Call for tenders, tender assessment and awarding (private and public markets)
- Work management, scheduling, supervision and coordination, construction work inspection, quality assurance, construction contract management
- Tests, acceptance and commissioning management
- Personnel training
- Reliability improvement
- Maintenance and modernization strategy





Architecture Partners

RDA-Harris Design Group is a leading multidisciplinary design house. Together with our associates we can provide a comprehensive design package for the building industry. In essence we provide holistic design solutions. We are your 'one -stop' partner. We can manage the design process, organize team-members and tailor-made the services to suit your specific needs. Our attitude is about giving the best : creative design solutions, turning problems into opportunities and adding value to your products. By asking the right question, we seek to emphatically understand the clients' needs and design brief. We believe this is a good start in providing the right design solutions for projects. The gathering of like-minded individuals with vast and varied experiences enables us to provide solutions that are innovative and creative. We design to the site context and genius loci. We believe in respecting the local culture, traditions and experiences. We seek to enhance the quality of life thought design.



RDA-Harris View



RDA-Harris Design Group

Throughout history, mankind has shaped the built-environment to suit his needs. Civilizations come and go, each leaves its own unique mark on the planet. Invariably it is the man-made environment and architecture that reflects the greatness of a civilization.

So, what would the 21st Century offer? Given the technological means and capacity available today we have an unprecedented power to shape the Earth. But we must do this responsibly and with respect; we simply cannot afford to do otherwise.

The architect thus plays a pivotal role: he must contribute to a quality built-environment; one that is sustainable and humane. The built-environment must be in harmony with the natural. This is the hallmark of a great civilization.

- Interior Architecture
- Industrial Design
- Architecture
- Graphics & Product branding





ZIMMERMANN ARCHITECTES SA

ZIMMERMANN ARCHITECTES SA has been providing professional architectural planning and design services for more than 43 years. The firm's approach to architectural design is to effectively facilitate a collaborative, consensus-generating design process that produces customized, purpose-specific building environments that enhance end-user performance and maintains strict control of budget and schedule objectives.



Master Planning

- Programming & Schematic Design
- Design Development
- Sustainable Design Integration
- BIM Documentation
- 3-Dimensional Animation
- Interior Design
- Graphic Design
- Cost Estimating & Scheduling
- Bidding & Negotiations
- Furniture Selection
- Construction Observation

Zimmermann Architectes SA
Rue du Jura 12
1196 Gland
Suisse

Téléphone:

+41 (0) 22 364 54 54

Fax:

+41 (0) 22 364 45 24

Email:

info@zimmermannsa.com

Situation:





Land surveyor Partners





For more than 20 years Gilbert Henchoz has been applying a radically different approach to the conception and landscaping of outdoor spaces. With 3 bases - Geneva, Lausanne, Archamps (France) - and a team of 20 professionals, this advisory service landscape architects' company provides know-how combined with a diversity of competences which permit the creation of unique and tailor made outdoor areas. In the words of its founder, Mr. Gilbert Henchoz, its success "stems from its capacity to bring a dynamic range of services to the environment" and to be able to respond to every type of long term large scale project. Blending emotion and creativity, each realisation is unique, maximising the injection of new energy into an aspect of nature that is sometimes forgotten.

This design company has set itself apart with its structure quite outside normal proportions, ensuring its credibility both on the national level as well as world wide. With creations realised in 15 different countries, the latest projects being in China and Finland, any international barriers have been by-passed, a quite exceptional feat for this type of activity. With ample proof of its taste for innovation and taking on challenges, the agency has just captured the contract for the landscaping provision on the "Voie Verte", the future Green Line rail-link between Geneva and Annemasse. If 50% of the company's clients are from the public sector, the other half consists of projects for the wealthiest of private clients. Moreover, one of the realisations has received the "Trophée d'Or" for outstanding landscaping achievements for 2008, awarded to the most beautiful gardens in all of France.



Garden

- Private and public gardens
- Parks
- Rooftop gardens and terraces
- Arboretums, educational, historical and botanical gardens

Landscape

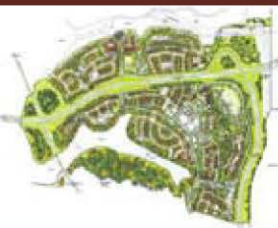
- Site integration
- Plants genetics
- Reforestation, improving
- greenness and natural plantations
- Landscaping around
- rivers, lakes and pounds
- Ecological concept

Various concepts

- Dendrological survey and tree-dwelling management
- Landscape development planning
- Swimming pools and biotope
- Design and outside furniture for urban and private properties
- Automatic watering systems

GENÈVE
Route de Jussy 29 - 1226 Thônex
T: +41 22 349 33 10 - F: +41 22 349 01 47

LAUSANNE
Chemin d'Entre-Bois 2 Bis - 1018 Lausanne
T: +41 21 647 86 11 - F: +41 21 647 86 24
henchoz@hench.com - www.hench.com





M.E.P Partners





About HTE Group

The HTE Group is a multi-disciplined firm specializing in mechanical, electrical, plumbing engineering, fire protection, and energy conservation services for commercial, governmental, industrial, institutional, religious and residential facilities. Our staff consists of highly trained individuals with a range of 5 to 20 years of professional experience. Staff members are licensed to perform professional services in Virginia, Maryland and Washington, D.C. The primary goal of The HTE Group is to provide our clients with a high level of technical knowledge, responsive personnel, and cost effective management of client resources. We understand the importance of utilizing existing building systems and resources to reduce renovation costs. For new buildings or spaces, we use our knowledge of latest products, systems and code requirements to produce short and long term cost savings.



HTE Group Services



The HTE Group, LLC
Building Engineering Systems Design

1021 Arlington Blvd, Suite 804
Arlinton VA, 22209 USA
Tel: 703 340 4462

Daughters of Butti Al Otaiba
Building Khalifa street –
P.O. Box : 114564 - Abu Dhabi
Tel: 02 6277442 - Fax: 02 6260553

www.thehtegroup-ad.com

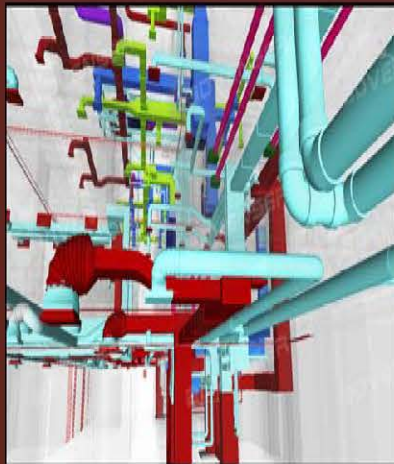
- Mechanical, Electrical, Plumbing And Fire Protection
- As-Built Drawings
- Building Evaluations
- Building Renovations
- CADD Services
- Construction/Administration Services
- Cost Estimation
- Energy Conservation
- Feasibility Studies
- Prospectus Development Reports
- Replacement Of Chillers, Boilers and Other Air-Conditioning Equipment
- Construction Quality Management





www.swissgulfengineering.com





السويسرية الخليجية للهندسة ذ.م.م

Swiss Gulf Engineering W.L.L

Regency Business Center Corniche Road, P.O.Box 15472 Doha-Qatar

Tel: +974 4412 3669, Fax: +974 4412 3670

www.swissgulfengineering.com